






Mobile excavator TW170



-  17,1 - 17,8 t
-  105 kW (141 hp)
-  0,76 - 1,3 m³



STABLE. STRONG. STEADY.

TW170

Technical Information

ENGINE

Power according to ISO 9249.....105kW (141hp)	Cylinder capacity.....6057 cm ³	Air filter	Dry air filter
RPM.....2000/min	Number of cylinders.....6	Battery.....2x 12V 2x100 Ah	
Make/model.....DeutzTCD2012L062V	Borehole/lift	Alternator	24 V/55 Ah
Design	Turbocharger/LLK	Cooling system	Water-cooled
		Starter	24 V/4,8 kW

HYDRAULICS SYSTEM

<ul style="list-style-type: none"> • AWE 5 system (load sensing) • Maximum-load-controlled high-performance piston pumps • Fuel-efficient required power regulation • Sensitive, proportional, independent steering • Primary and secondary protection against overload • Prefill valves for all work functions • Load-hold and fine-drop valve in lifting circuit • Pipe rupture valve for lifting cylinder 	<ul style="list-style-type: none"> • Standard gripper / gripper rotating function • 2 additional circuits for additional consumer loads possible
Operating modes:	
3 pre-programmed modes (Fine, Eco, Power)	
	<ul style="list-style-type: none"> • Max. discharge flow
	<ul style="list-style-type: none"> • Max. operating pressure

PIVOTING ASSEMBLY

<ul style="list-style-type: none"> • Oscillating motor Axial piston motor with priority valve • Pivoting transmission Planetary transmission • Pivoting brakes Automatic multidisc parking brake 	<ul style="list-style-type: none"> • Max. upper wagon RPM
	<ul style="list-style-type: none"> • Oscillating torque

TRACTION DRIVE AND BRAKES

<ul style="list-style-type: none"> • Control traction motor • Power-shift transmission • Dual-purpose brake valve • Driving direction pre-selection via switch in the pilot lever 	<ul style="list-style-type: none"> • Automotive driving and cruise control • Maximum speed	<ul style="list-style-type: none"> • Max. climbing power
---	---	--

LOWER WAGON

<ul style="list-style-type: none"> • 28 t special excavator axles • Steering axle with automatic swing axle blocking 	<ul style="list-style-type: none"> • 8 tyres	<ul style="list-style-type: none"> • 4 tyres (optional)
--	--	---

FÜLLMENGEN

<ul style="list-style-type: none"> • Fuel tank
<ul style="list-style-type: none"> • Cooling system

DRIVER CAB

<ul style="list-style-type: none"> • Extra-wide entrance • Left arm console can be folded up • Spacious leg room • Excellent all-around view • Preparation for radio installation 	STEERING: <ul style="list-style-type: none"> • Ergonomic pilot lever • Narrowness, height and tilt of the steering column can be adjusted • Clear and concise arrangement of the switches in the control panel 	CLIMATE CONTROL: <ul style="list-style-type: none"> • Air conditioner standard in all models • Very good air distribution through optimally arranged nozzles
DRIVER'S SEAT: <ul style="list-style-type: none"> • Comfort seat, air-suspended and heated (optional) • Arm rests and lumbar support • Can be adjusted separately from the console 	MONITORING: <ul style="list-style-type: none"> • Operating data appears in a display • Automatic monitoring, warning and saving 	<ul style="list-style-type: none"> • ISO 6396 (LpA) in driving cab 74 dB(A) • 2000/14EG (LwA) based on outside level 99 dB(A)

Equipment

OPERATING WEIGHTS	Monoblock 4,32 m (C6.3M)		ADJUSTABLE BOOM Main arm 1.87 m (C6.41) Boom 3.10 m (C53.46)	
	Bending arm 2.15 m (D52.2)	Bending arm 2,65 m (D52.3)	Bending arm 2.15 m (D52.2)	Bending arm 2,65 m (D52.3)
Support dozer blad	-	-	-	-
APS / claws	17,1 t	17,2 t	17,5 t	17,6 t
4 support claws	17,3 t	17,4 t	17,7 t	17,8 t

Operating weight with driver, completely filled implement and 1 tonne for attachments

EQUIPMENT

BASIC DEVICE TEREX TW170 (can be combined)	Standard equipment	<ul style="list-style-type: none"> Left arm console can be folded up Heat-insulating glass, tinted windows Automotive driving and cruise control Operating data appears in a display
<ul style="list-style-type: none"> Mobile excavator TW170 with quadruple claw support and 2 lifting cylinders (A 7.32) Mobile excavator TW170 with APS on rigid axle, double claw support on steering axle and 2 lifting cylinders (A 7.33) Mobile excavator TW170 with APS on steering axle, double claw support on rigid axle and 2 lifting cylinders (A 7.35) 	<ul style="list-style-type: none"> Engine: Automatic idle Diesel pre-filter Engine monitoring 	
Boom:	Hydraulics:	Equipment:
<ul style="list-style-type: none"> Monoblock boom with bending cylinder 4.32 m (C 6.3M) Adjustable boom consisting of the main arm 1.87 m (C 6.41) with adjustable cylinder and boom 3.10 m (C 53.46) with bending cylinder 	<ul style="list-style-type: none"> Gripper / gripper rotating function Accumulator for emergency lowering of the arm system Pipe rupture valve for lifting cylinder Combination valve Max. load control Cylinder end-stop damping 	<ul style="list-style-type: none"> Ball and socket joint in the bend and scoop cylinder Consolidated lubrication points for rotating assembly and arm equipment
Bending arms:	Cab:	Lower wagon:
<ul style="list-style-type: none"> Bending arm 2.15 m (D 53.2) Bending arm 2.65 m (D 53.3) 	<ul style="list-style-type: none"> Air conditioner Radio preparation Height and tilt of the steering column can be adjusted Seat can be moved separately from control panel 	<ul style="list-style-type: none"> Power-shift transmission Disc brakes in the oil bath of the wheel hub Tool box in the lower wagon

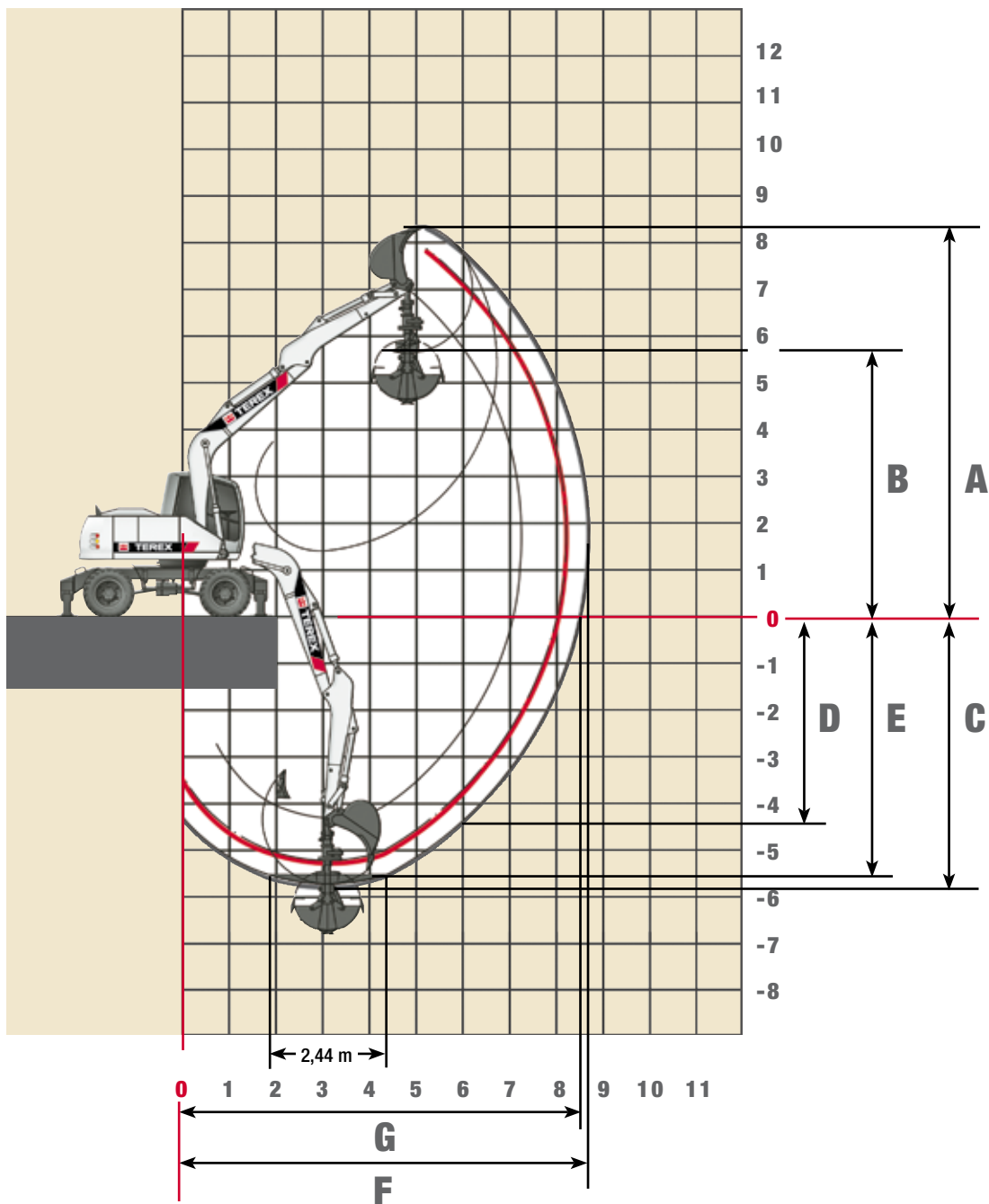
ADDITIONAL EQUIPMENT

Engine:	Equipment:	Lower wagon:
<ul style="list-style-type: none"> Fuel pump RPM / potentiometer Supplementary heating system Cold startup assistance 	<ul style="list-style-type: none"> Central lubrication system 	<ul style="list-style-type: none"> Broadened axles (overall width 2750 mm) Broadened dozer blade (overall width 2750 mm) High-speed engine
Hydraulics:	Cab:	Other special equipment:
<ul style="list-style-type: none"> Hydr. adaptor kit, switch supports pairwise in front and back Hydr. adaptor kit, switch supports individually Bio oil 	<ul style="list-style-type: none"> Rock protection guard 360° lighting Heated driver's seat Heated side windows Radio Cab heightening 	See price list

ATTACHMENTS

	Scoop F417	Scoop F415	Scoop F648	Scoop F416
Content SAE	0,92 m ³	0,67 m ³	1,12 m ³	0,82 m ³
Cutting width	1100 mm	850 mm	1300 mm	1000 mm

Work Areas Monoblock 4,32 m (C6.3M)



BENDING ARM LENGTHS	2,15 m (D53.2)	2,65 m (D53.3)
A Max. cut-in height	8,10 meters	8,35 meters
B Max. pouring height	5,35 meters	5,65 meters
C Max. trench depth	5,20 meters	5,70 meters
D Max. vertical tapping depth	4,05 meters	4,55 meters
E Max. trench depth with 2.44-metre-wide base	4,95 meters	5,50 meters
F Max. reach	8,25 meters	8,70 meters
G Max. reach in the standing plane	8,05 meters	8,50 meters
Max. breakaway torque	130 kN	130 kN
Max. breakout force	82 kN	72 kN

Unit is equipped with monoblock attachment 4.32 m (C 6.3M).

Lifting Capacities Monoblock 4,32 m (C 6.3M)

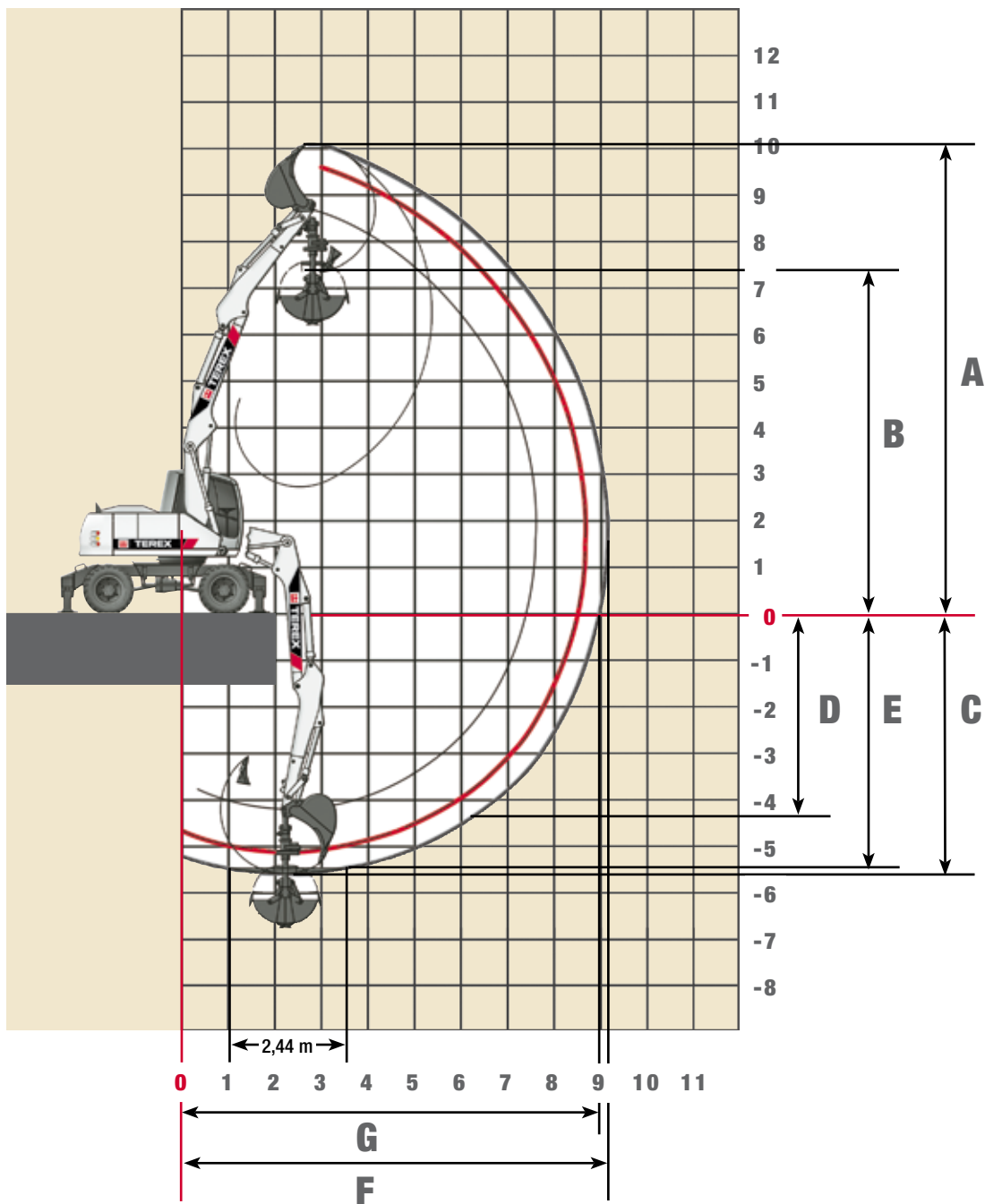
Lifting Capacities Monoblock 4,32 m (C 6.3M) with Bending Arm 2,15 m (D 53.2). Max. Reach 8,20 m

Height	Lower wagon type	3,0 m		4,5 m		6,0 m		7,5 m	
		FRONT	LATERAL	FRONT	LATERAL	FRONT	LATERAL	FRONT	LATERAL
+6,0 m	APS raised in the back								
	APS lowered in the back								
	Claws hi / vo lowered								
	APS / claws lowered								
+4,5 m	APS raised in the back					3927*	2885		
	APS lowered in the back					3927*	3207		
	Claws hi / vo lowered					3927*	3927*		
	APS / claws lowered					3927*	3927*		
+3,0 m	APS raised in the back			5001*	4225	4117*	2827		
	APS lowered in the back			5001*	4731	4117*	3148		
	Claws hi / vo lowered			5001*	5001*	4117*	4117*		
	APS / claws lowered			5001*	5001*	4117*	4117*		
+1,5 m	APS raised in the back			5899*	3979	4438*	2730		
	APS lowered in the back			5899*	4476	4438*	3048		
	Claws hi / vo lowered			5899*	5899*	4438*	4438*		
	APS / claws lowered			5899*	5899*	4438*	4192		
0 m	APS raised in the back	7470*	6654	6289*	3829	4546	2661		
	APS lowered in the back	7470*	7470*	6289*	4322	4551*	2979		
	Claws hi / vo lowered	7470*	7470*	6289*	6289*	4551*	4551*		
	APS / claws lowered	7470*	7470*	6289*	6138	4551*	4118		
-1,5 m	APS raised in the back	8854*	6717	5928*	3820				
	APS lowered in the back	8854*	7751	5928*	4312				
	Claws hi / vo lowered	8854*	8854*	5928*	5928*				
	APS / claws lowered	8854*	8854*	5928*	5928*				
-3,0 m	APS raised in the back	6451*	6451*	4112*	3958				
	APS lowered in the back	6451*	6451*	4112*	4112*				
	Claws hi / vo lowered	6451*	6451*	4112*	4112*				
	APS / claws lowered	6451*	6451*	4112*	4112*				

Lifting Capacities Monoblock 4,32 m (C 6.3M) with Bending Arm 2,65 m (D 53.3). Max. Reach 8,70 m

Height	Lower wagon type	3,0 m		4,5 m		6,0 m		7,5 m	
		FRONT	LATERAL	FRONT	LATERAL	FRONT	LATERAL	FRONT	LATERAL
+6,0 m	APS raised in the back								
	APS lowered in the back								
	Claws hi / vo lowered								
	APS / claws lowered								
+4,5 m	APS raised in the back					3542*	2918		
	APS lowered in the back					3542*	3238		
	Claws hi / vo lowered					3542*	3542*		
	APS / claws lowered					3542*	3542*		
+3,0 m	APS raised in the back			4554*	4266	3836*	2833		
	APS lowered in the back			4554*	4554*	3836*	3152		
	Claws hi / vo lowered			4554*	4554*	3836*	3836*		
	APS / claws lowered			4554*	4554*	3836*	3836*		
+1,5 m	APS raised in the back			5567*	3985	4242*	2716		
	APS lowered in the back			5567*	4479	4242*	3031		
	Claws hi / vo lowered			5567*	5567*	4242*	4242*		
	APS / claws lowered			5567*	5567*	4242*	4199		
0 m	APS raised in the back	7879*	6551	6168*	3789	4484	2621		
	APS lowered in the back	7879*	7569	6168*	4276	4494*	2935		
	Claws hi / vo lowered	7879*	7879*	6168*	6168*	4494*	4494*		
	APS / claws lowered	7879*	7879*	6168*	6126	4494*	4097		
-1,5 m	APS raised in the back	9359*	6553	6079*	3733	4296*	2603		
	APS lowered in the back	9359*	7571	6079*	4218	4296*	2917		
	Claws hi / vo lowered	9359*	9359*	6079*	6079*	4296*	4296*		
	APS / claws lowered	9359*	9359*	6079*	6062	4296*	4077		
-3,0 m	APS raised in the back	7495*	6709	4967*	3813				
	APS lowered in the back	7495*	7495*	4967*	4301				
	Claws hi / vo lowered	7495*	7495*	4967*	4967*				
	APS / claws lowered	7495*	7495*	4967*	4967*				

The specified max. loading capacities in kilogrammes include a stability of 33% or are calculated at 87% of the hydraulic lifting power, as per ISO10567. These values are applicable at the tip of the arm with optimum positioning of the corresponding arm system and with the pressure switched on. * Value limited due to hydraulics.

Work Areas Adjustable Boom, Main Arm 1.87 m (C6.41) and Boom 3.10 m (C53.46)


BENDING ARM LENGTHS	2,15 m (D53.2)	2,65 m (D53.3)
A Max. cut-in height	9,70 meters	10,10 meters
B Max. pouring height	6,95 meters	7,35 meters
C Max. trench depth	5,10 meters	5,60 meters
D Max. vertical tapping depth	3,80 meters	4,30 meters
E Max. trench depth with 2.44-metre-wide base	5,00 meters	5,50 meters
F Max. reach	8,70 meters	9,20 meters
G Max. reach in the standing plane	8,55 meters	9,00 meters
Max. breakaway torque	130 kN	130 kN
Max. breakout force	82 kN	72 kN

Unit is equipped with standard adjustable boom: main arm 1.87 m (6.41) and boom 3.10 m (53.46).

Lifting Capacities Adjustable Boom, Main Arm 1.87 m (C6.41) and Boom 3.10 m (C53.46)

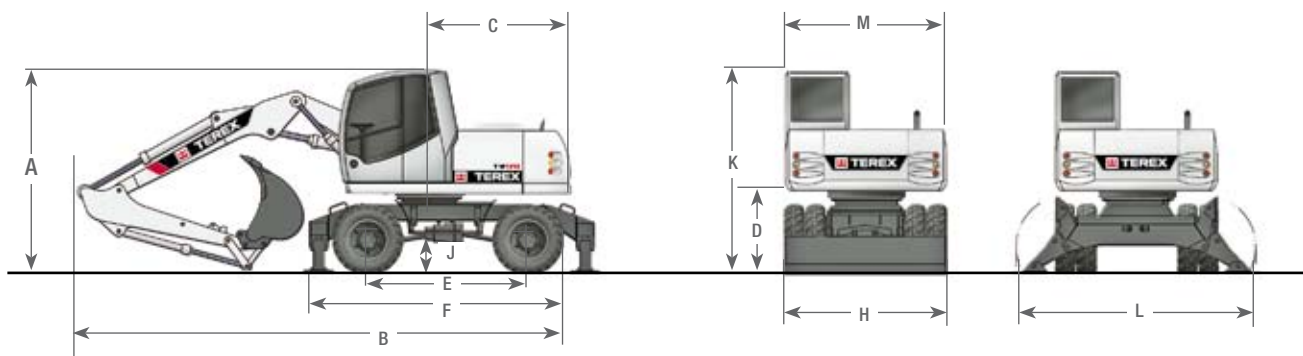
Lifting Capacities Adjustable Boom: Main Arm 1.87 m (C6.41) and Boom 3.10 (53.46) with Bending Arm 2.15 m (D 52.2). Max. Reach 8.70 m

Height	Lower wagon type	3,0 m		4,5 m		6,0 m		7,5 m	
		FRONT	LATERAL	FRONT	LATERAL	FRONT	LATERAL	FRONT	LATERAL
+6,0 m	APS raised in the back			4525*	4463				
	APS lowered in the back			4525*	4525*				
	Claws hi / vo lowered			4525*	4525*				
	APS / claws lowered			4525*	4525*				
+4,5 m	APS raised in the back	6478*	6478*	4879*	4386*	4044*	2907		
	APS lowered in the back	6478*	6478*	4879*	4830	4044*	3232		
	Claws hi / vo lowered	6478*	6478*	4879*	4879*	4044*	4044*		
	APS / claws lowered	6478*	6478*	4879*	4879*	4044*	4044*		
+3,0 m	APS raised in the back	7198*	7198*	5575*	4269	4252*	2905		
	APS lowered in the back	7198*	7198*	5575*	4700*	4252*	3230		
	Claws hi / vo lowered	7198*	7198*	5575*	5575*	4252*	4252*		
	APS / claws lowered	7198*	7198*	5575*	5575*	4252*	4227		
+1,5 m	APS raised in the back	8536*	7249	6074*	4217*	4417*	2819		
	APS lowered in the back	8536*	8098	6074*	4637*	4417*	3142		
	Claws hi / vo lowered	8536*	8536*	6074*	6074*	4417*	4417*		
	APS / claws lowered	8536*	8536*	6074*	6074*	4417*	4189*		
0 m	APS raised in the back	9803*	7179	6112*	4119	4437*	2684		
	APS lowered in the back	9803*	8201	6112*	4624	4437*	3004		
	Claws hi / vo lowered	9803*	9803*	6112*	6112*	4437*	4437*		
	APS / claws lowered	9803*	9803*	6112*	6092	4437*	4186		
-1,5 m	APS raised in the back	10090*	6951	6279*	3956	4177*	2588		
	APS lowered in the back	10090*	8004	6279*	4456	4177*	2906		
	Claws hi / vo lowered	10090*	10090*	6279*	6279*	4177*	4177*		
	APS / claws lowered	10090*	10090*	5056*	6279*	4177*	4081		
-3,0 m	APS raised in the back	9759*	6938	5056*	3838				
	APS lowered in the back	9759*	7991	5056*	4334				
	Claws hi / vo lowered	9759*	9759*	5056*	5056*				
	APS / claws lowered	9759*	9759*	5056*	5056*				

Lifting Capacities Adjustable Boom: Main Arm 1.87 m (C6.41) and Boom 3.10 (53.46) with Bending Arm 2.65 m (D 52.3). Max. Reach 9.20 m

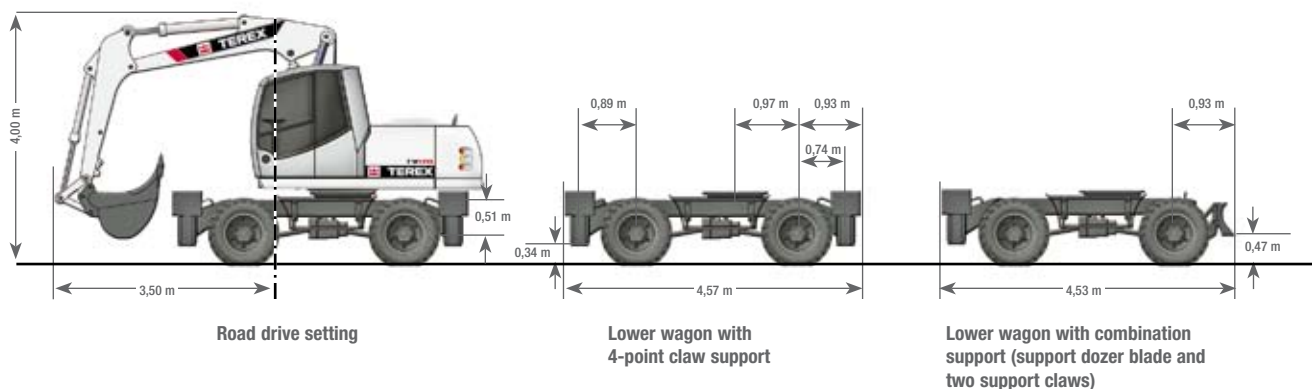
Height	Lower wagon type	3,0 m		4,5 m		6,0 m		7,5 m	
		FRONT	LATERAL	FRONT	LATERAL	FRONT	LATERAL	FRONT	LATERAL
+6,0 m	APS raised in the back			4133*	4133*	3748*	2926		
	APS lowered in the back			4133*	4133*	3748*	3251		
	Claws hi / vo lowered			4133*	4133*	3748*	3748*		
	APS / claws lowered			4133*	4133*	3748*	3748*		
+4,5 m	APS raised in the back			4515*	4414	3808*	2973		
	APS lowered in the back			4515*	4515*	3808*	3261		
	Claws hi / vo lowered			4515*	4515*	3808*	3808*		
	APS / claws lowered			4515*	4515*	3808*	3808*		
+3,0 m	APS raised in the back	7074*	7074*	5253*	4267	4071*	2937	3334	1984
	APS lowered in the back	7074*	7074*	5253*	4705*	4071*	3215	3401*	2218
	Claws hi / vo lowered	7074*	7074*	5253*	5253*	4071*	4071*	3401*	3401*
	APS / claws lowered	7074*	7074*	5253*	5253*	4071*	4071*	3401*	3069
+1,5 m	APS raised in the back	8397*	7186	5900*	4179	4316*	2913	3295	1946
	APS lowered in the back	8397*	8033	5900*	4590*	4316*	3205	3410*	2180
	Claws hi / vo lowered	8397*	8397*	5900*	5900*	4316*	4316*	3410*	3410*
	APS / claws lowered	8397*	8397*	5900*	5900*	4316*	4151	3410*	3032
0 m	APS raised in the back	9469*	7220	6027*	4153	4361*	2750	3222*	1897
	APS lowered in the back	9469*	8081	6027*	4617	4361*	3073	3222*	2130
	Claws hi / vo lowered	9469*	9469*	6027*	6027*	4361*	4361*	3222*	3222*
	APS / claws lowered	9469*	9469*	6027*	6015*	4361*	4165	3222*	2982
-1,5 m	APS raised in the back	9893*	6938	6116*	3970	4453*	2594		
	APS lowered in the back	9893*	7993	6116*	4472	4453*	2913		
	Claws hi / vo lowered	9893*	9893*	6116*	6116*	4453*	4453*		
	APS / claws lowered	9893*	9893*	6116*	6111*	4453*	4092		
-3,0 m	APS raised in the back	10284*	6906	5993*	3812				
	APS lowered in the back	10284*	7959	5993*	4308				
	Claws hi / vo lowered	10284*	10284*	5993*	5993*				
	APS / claws lowered	10284*	10284*	5993*	5993*				

The specified max. loading capacities in kilogrammes include a stability of 33% or are calculated at 87% of the hydraulic lifting power, as per ISO10567. These values are applicable at the tip of the arm with optimum positioning of the corresponding arm system and with the pressure switched on. * Value limited due to hydraulics.

Dimensions
DIMENSIONS WITH CHASSIS MOUNT


A	TRANSPORT HEIGHT (with scoop)		C	REAR PIVOTING RADIUS	2,19 m
	Adjustable boom* with bending arm 2.16 m.....	3,08 m	D	CLEARANCE HEIGHT TO UPPER WAGON	1,22 m
	Adjustable boom* with bending arm 2.65 m.....	3,08 m	E	WHEEL BASE	2,50 m
	Monoblock 4.32 m with bending arm 2.16 m.....	3,15 m	F	LOWER WAGON LENGTH	3,98 m
	Monoblock 4.32 m with bending arm 2.65 m.....	3,15 m	H	DOZER BLADE WIDTH	2,49 m
B	TRANSPORT LENGTH		J	GROUND CLEARANCE	0,45 m
	Adjustable boom* with bending arm 2.16 m.....	7,71 m	K	HEIGHT ABOVE CAB	3,08 m
	Adjustable boom* with bending arm 2.65 m.....	8,05 m	L	CLAW WIDTH (extended)	3,50 m
	Monoblock 4.32 m with bending arm 2.16 m.....	7,55 m	M	UPPER WAGON TRANSPORT WIDTH	2,50 m
	Monoblock 4.32 m with bending arm 2.56 m.....	7,55 m			

Adjustable boom: main arm 1.87 m (C6.41) and boom 3.10 m (C53.46)



TEREX GmbH
 Atlasstr.6
 27777 Ganderkesee
 Deutschland
 Tel. +49 (0) 4222 / 954-0
 Fax: +49 (0) 4222 / 954-343

www.terex.de
 E-Mail: info@terex-atlas.de